

Strait-Flex® Uno-Bead 222

Flexible Corner Bead - Composite

Designed for replacing or repairing metal corner bead, Strait-Flex Uno-Bead 222 is Ideal for drywall, thin-coat plaster applications.

- Creates perfect inside and outside corners.
- High traffic areas where bumps and dents commonly occur.
- Permanent replacement for damaged metal corner bead.
- Eliminates edge cracking.

Product Data & Ordering Information

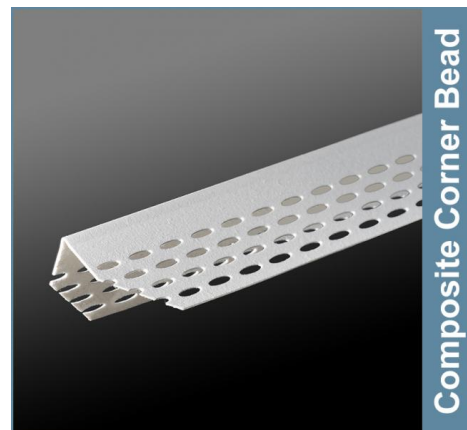
Product Code	Width	Length	Wholesale Case Rolls/Case Pack	Wholesale Case Cases/Pallet
UB222-100	2.22"	100'	12	24

ASTM & Code Standards

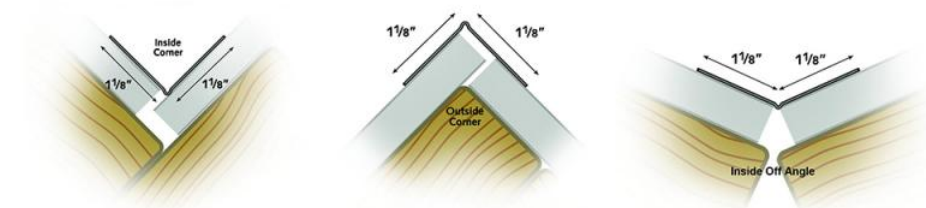
- ASTM C1047 - Standard Specification for Accessories for Gypsum Wallboard
- SDS & Product Certification Information is available at www.clarkdietrich.com/SupportDocs

Storage

All stored materials shall be kept dry. Materials shall be stacked off the ground, supported on a level platform, and protected from weather and moisture.



Composite Corner Bead



Importør

NCPE

NO COMPROMISE. FORTIFYING. EQUIPMENT.

Adress

NCPE Sweden AB
Europavägen 3A
512 91 Sexdrega
Sverige

Teknisk service

+46 325-700 40
info@ncpesweden.se